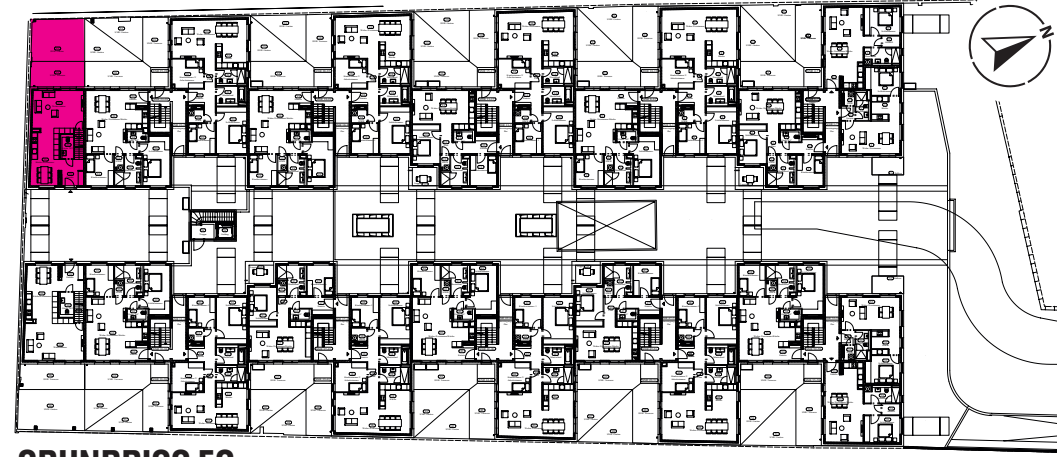


MOTHESES KARRERE

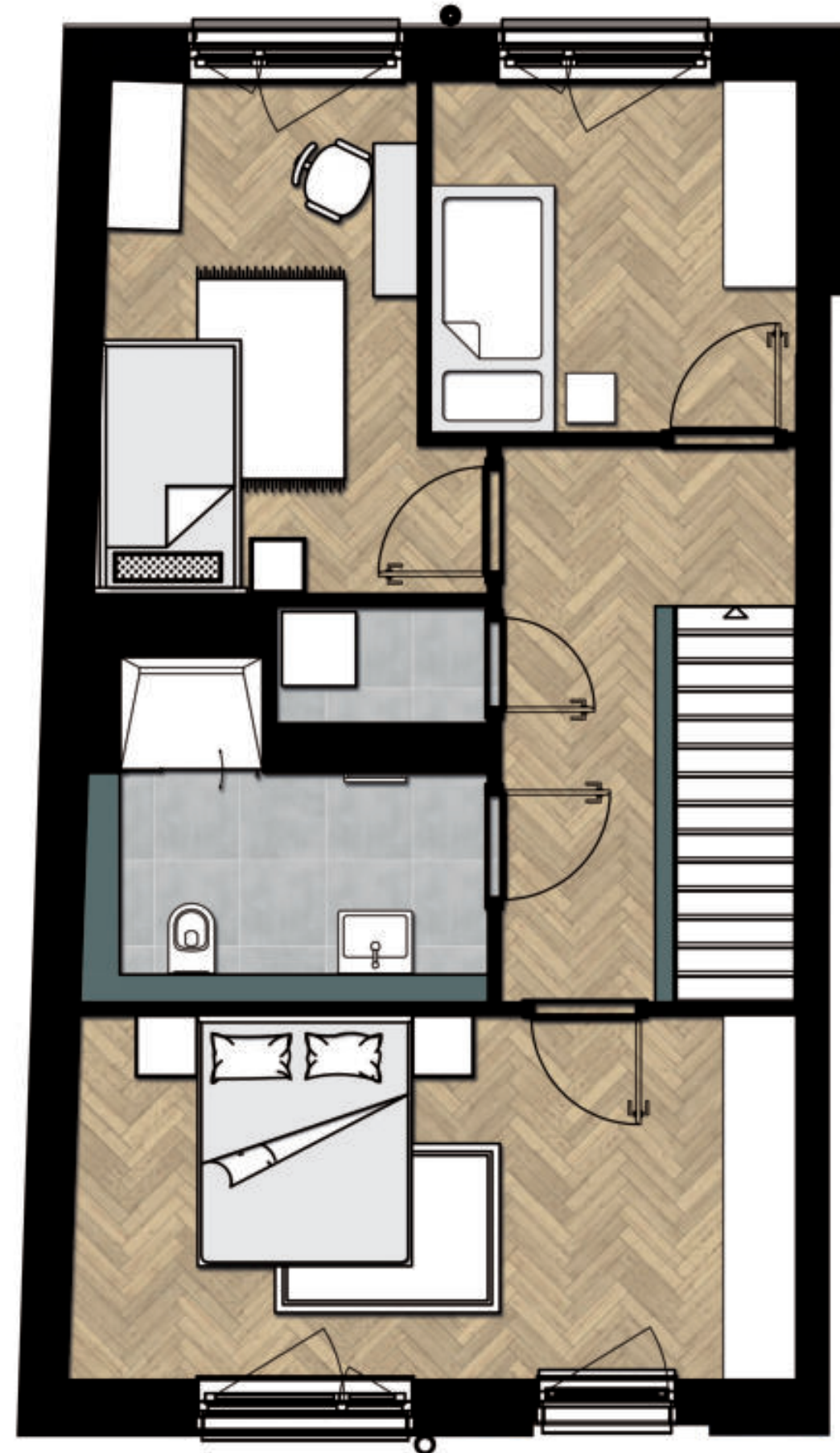


EG

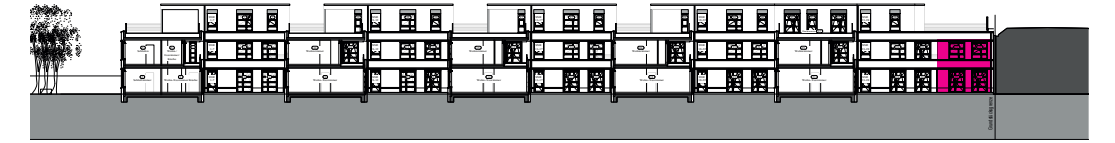
STADTHAUS 29



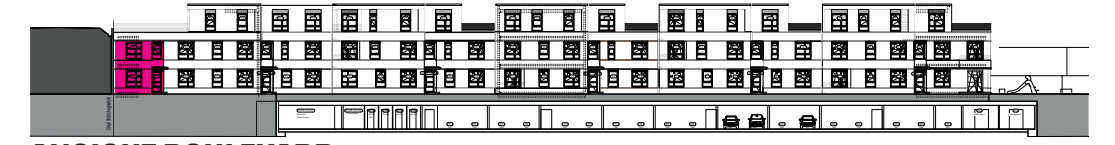
GRUNDRISS EG



1. OG



ANSICHT GARTEN



ANSICHT BOULEVARD

Raum	Fläche (m ²)
Entrée	7,04
Wo/Ess/Ko	43,94
Abst.	1,42
Gäste WC	3,55
Terrasse 50%	8,34
Flur 2	7,11
Schlafzimmer	17,14
Masterbad	7,01
HWR	1,62
Zimmer 1	11,20
Zimmer 2	8,39
summe	116,76