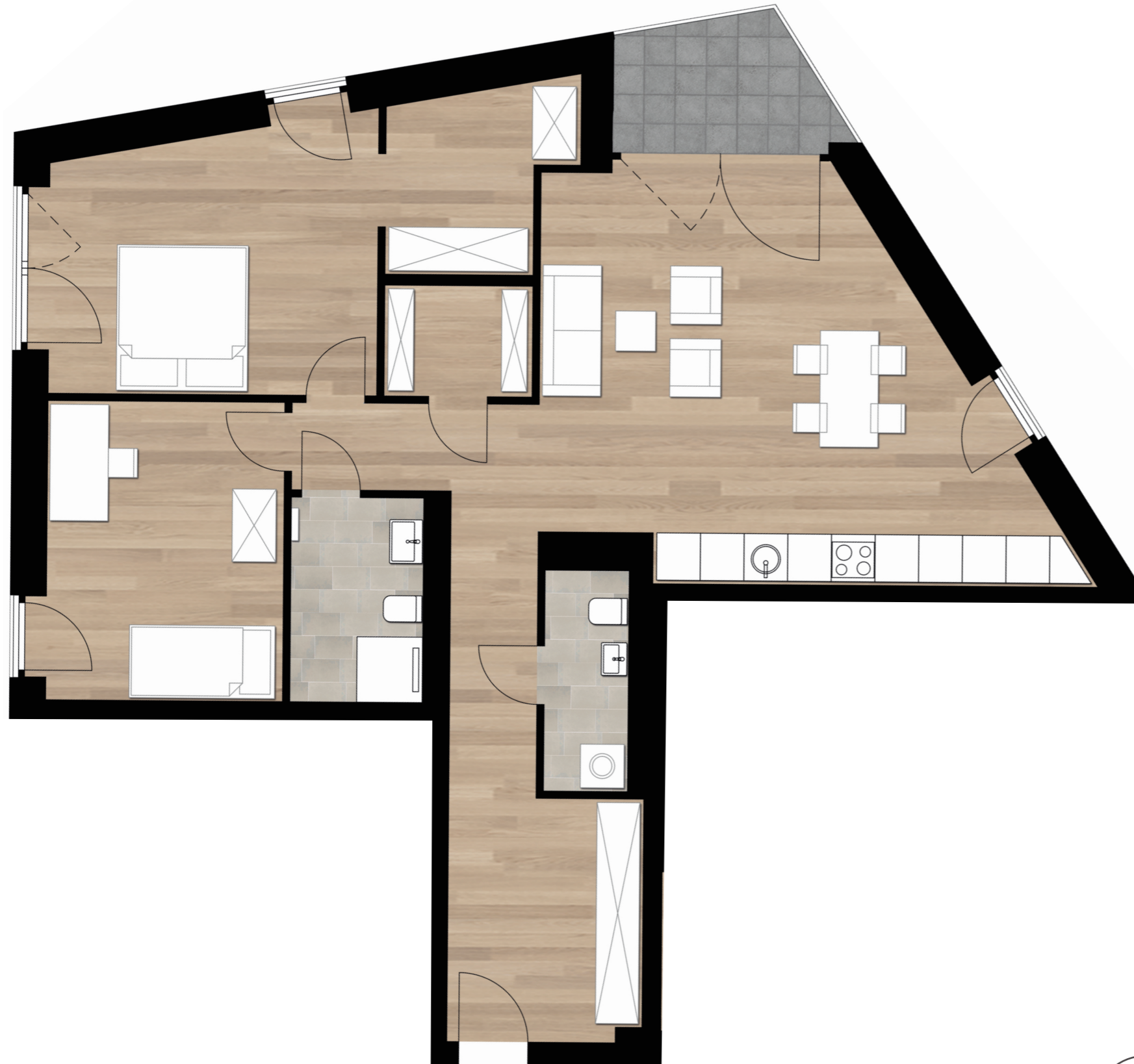


Bauteil C | 2. OG | WE 1 | 103,50 m<sup>2</sup>



WALLHÖFE

Raum	m <sup>2</sup>
Kochen/Essen/Wohnen	33,09
AR	3,10
Flur	18,05
Kind	13,73
Schlafen	17,19
AK	5,83
Bad 1	5,67
Bad 2	4,05
Loggia (50%)	2,74
	<b>103,50</b>

